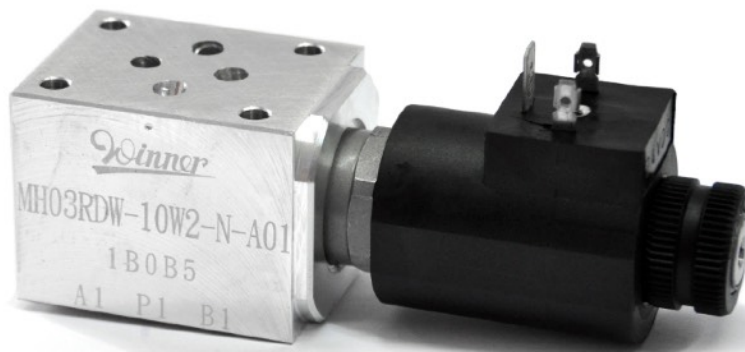
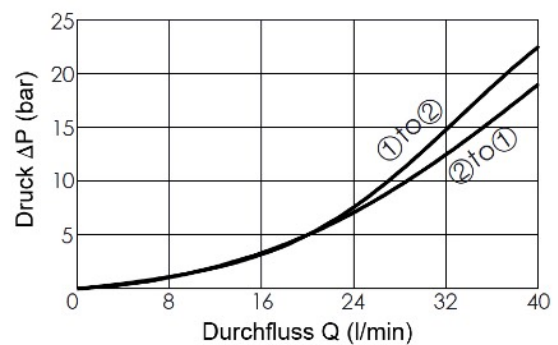
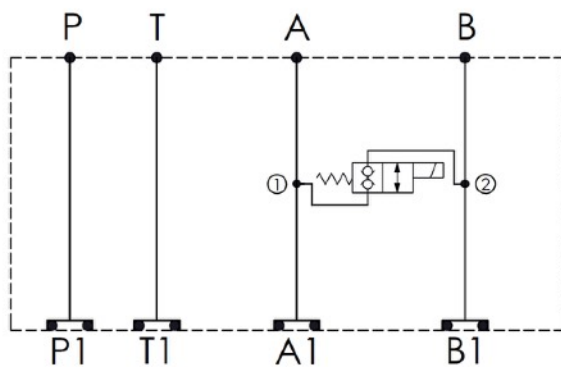


## Zwischenplatten-Sitzventil



### Technische Daten

- Betriebsdruck  $p = 250 \text{ bar}$
- Fördervolumen  $Q = 25 \text{ l/min}$
- **Stufenbohrung = 10W-2**
- Anziehdrehmoment = 60-70 Nm
- Gewicht = 0.51 kg



### Bestellcodes

- 2/2-Wege Sitzventil = EP-10W-2C-51-N-04
- Zwischenplatte NG6 = MH03RDW-10W2-N-A01
- Magnetspule, 24 V 26 W, DIN 43650